

# Distilling Script Knowledge from Large Language Models for Constrained Language Planning

Siyu Yuan<sup>1</sup> (syyuan21@m.fudan.edu.cn), Jiangjie Chen<sup>1</sup>, Ziquan Fu<sup>2</sup>, Xuyang Ge<sup>1</sup>,  
 Soham Shah<sup>3</sup>, Charles Robert Jankowski<sup>3</sup>, Yanghua Xiao<sup>1</sup>, Deqing Yang<sup>1</sup>  
<sup>1</sup>Fudan University, <sup>2</sup>System Inc, <sup>3</sup>Brain Technologies, Inc.

## Constrained Language Planning



How to make a **strawberry** cake



How to make a **chocolate** cake

- Previous work focus on planning for **abstract goals** of stereotypical activities
- We exploit **specific goals** with multi-facet **constraints**.

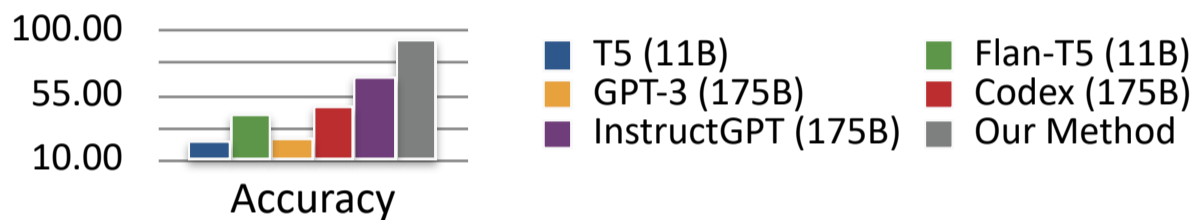
## Contribution

- Establish the **constrained language planning** problem
- Evaluate the **constrained language planning ability** of LLMs and develop an **over-generate-then-filter** method.
- Use LLMs to generate a dataset (**CoScript**) for constrained language planning

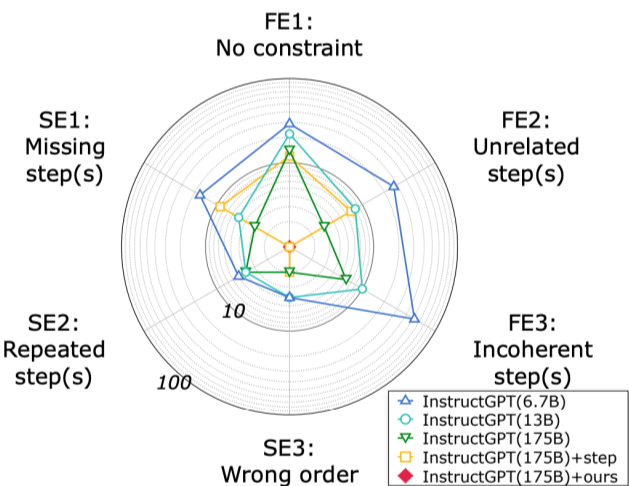
## Analysis of Large Language Models

Dataset: wikiHow+Generated Constraints

### LLMs can not achieve satisfactory performance



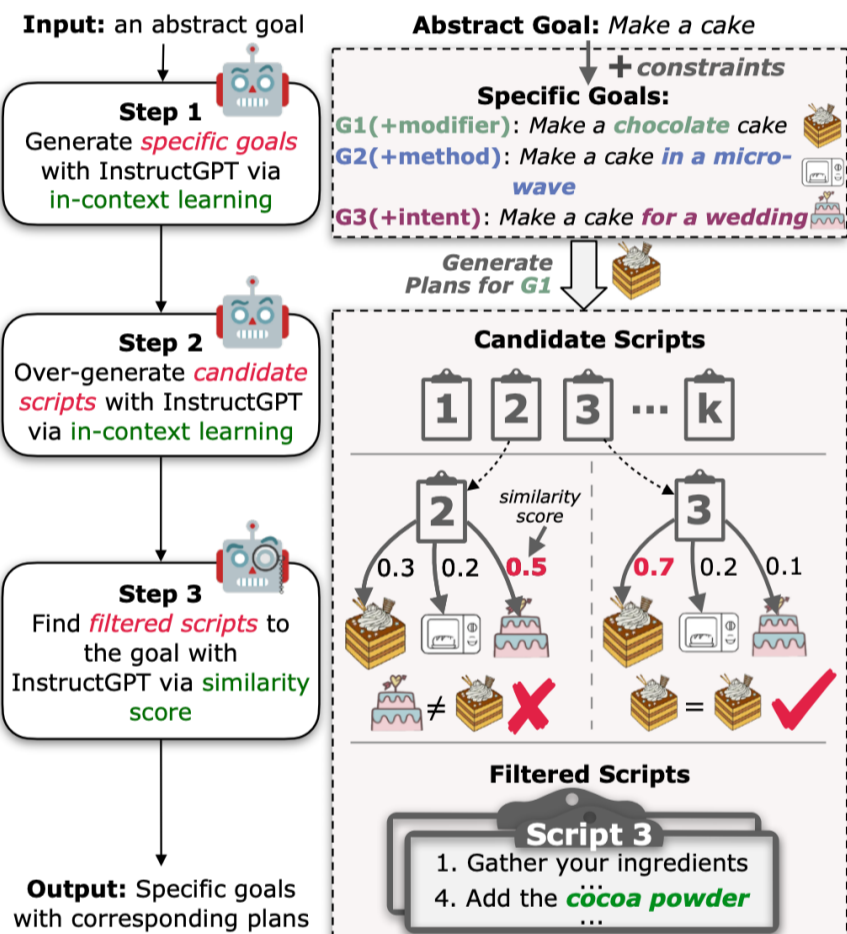
### LLMs sometimes do not plan faithfully to the constraints.



### LLMs varies considerably for goals of different categories

| Category      | 6.7B | 13B  | 175B | Step | Ours |
|---------------|------|------|------|------|------|
| Work          | 0.0  | 0.67 | 1.0  | 1.0  | 1.0  |
| Sports        | 0.25 | 0.5  | 1.0  | 1.0  | 1.0  |
| Relationships | 0.0  | 0.5  | 1.0  | 1.0  | 1.0  |
| Personal Care | 0.14 | 0.33 | 0.5  | 0.6  | 1.0  |
| Home          | 0.17 | 0.3  | 0.5  | 0.6  | 1.0  |
| Traditions    | 0.25 | 0.4  | 0.5  | 0.57 | 1.0  |
| Hobbies       | 0.1  | 0.42 | 0.6  | 0.67 | 0.88 |
| Health        | 0.33 | 0.5  | 0.57 | 0.75 | 0.9  |
| Food          | 0.28 | 0.66 | 0.78 | 0.78 | 0.94 |
| Business      | 0.33 | 0.5  | 1.0  | 0.67 | 1.0  |
| Family Life   | 0.0  | 0.0  | 1.0  | 0.67 | 1.0  |
| Education     | 0.2  | 0.33 | 0.5  | 0.67 | 1.0  |
| Electronics   | 0.25 | 0.38 | 0.6  | 0.62 | 0.92 |
| Vehicles      | 0.0  | 0.0  | 0.75 | 0.5  | 1.0  |
| Arts          | 0.33 | 0.29 | 1.0  | 0.5  | 1.0  |

### Our method



## Coscript for Smaller Language Models

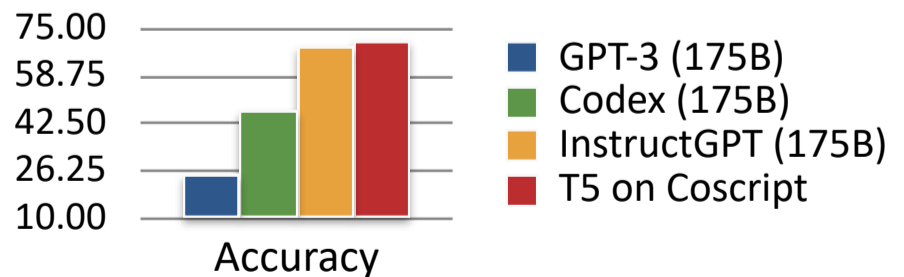
### Motivation

- To enable constrained language planning ability for smaller models.

### Data Statistics

| Dataset   | # Size  | # UT    | Avg <sub>g<sub>c</sub></sub> | # Avg <sub>s</sub> |
|-----------|---------|---------|------------------------------|--------------------|
| proScript | 6,414   | 8,826   | 0                            | 5.45               |
| wikiHow   | 112,111 | 158,117 | 0.42                         | 5.93               |
| CoScript  | 55,000  | 76,317  | 4.13                         | 5.96               |

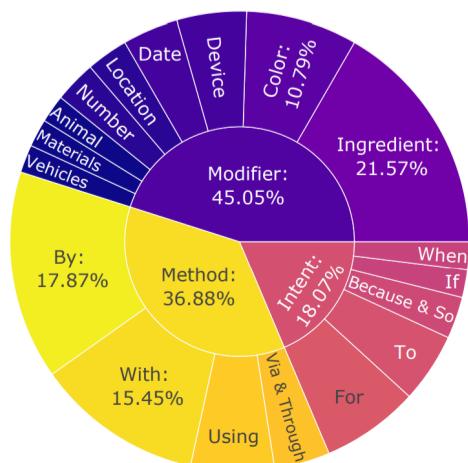
### Smaller LMs fine-tuned on CoScript can generate higher quality scripts than LLMs



### Method

- Follow the idea of **symbolic knowledge distillation**
- Generated 55,000 Scripts with constraint from LLMs based on our method → **Coscript Dataset**
- Humans annotate validation and test set.

### Constraint Distribution



**CoScript consistently improves model performance in constraint faithfulness**

